



Timeless styling and striking brickaded interior define luxurious comfort with a six-speed blower for powerful and soothing warmth.

LENNOXTM
HEARTH PRODUCTS

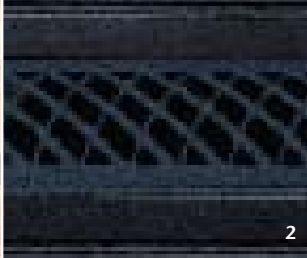
DAVE LENNOX
*signature*TM
COLLECTION



LSS-40 shown with charcoal black arched cast-iron facing and black air grille.

■ From the exquisite arched cast-iron facing to the striking brickaded firebox interior, the Spectra™ line of gas fireplaces from the Dave Lennox *Signature*™ Collection defines luxurious comfort. The sophistication begins with your choice of several attractive facings and finishes to perfectly complement your home environment. Inside the fireplaces, the second-to-none fire presentation embraces the senses. Lennox' Total Comfort Control system is coupled with glowing embers and charred split oak-style logs to exude authentic realism. To make your space perfect for any occasion, the variable speed blower and heat transfer grilles provide complete heat control. Inside and out, Spectra fireplaces deliver the ultimate choice in practical comfort and aesthetic beauty. ■

OPTIONAL ACCESSORIES



STANDARD FEATURES

High-efficiency, top direct-vent gas fireplace with ceramic-glass viewing area

Available in natural gas or propane versions and two sizes: 35"- or 40"-wide framed opening

Exclusive tiered burner with charred split oak-style logs and glowing embers

Standing pilot millivolt ignition system operates even in a power failure

High-performance variable-speed blower for maximum comfort control

Full-depth brickaded firebox for weathered brick look and custom masonry realism

Can be used with top-quality and reliable Secure Vent™ rigid or Secure Flex™ flexible venting systems from Security Chimneys™

The Total Comfort Control System features:

- Full-function remote system control flame adjustment through six settings and six blower speed settings from the comfort of your chair
- Intelligent temperature control built into the remote modulates flame height up and down to precisely maintain your desired temperature in the living space
- Wall mounted remote receiver with manual fireplace on/off control, provide easy access for backup battery replacement
- Switchable between standing and intermittent pilot modes
- Battery-backed-up valve system ensures reliable operation – even during a power failure

Lennox Limited Lifetime Warranty

OPTIONAL ACCESSORIES

Dimensional arched charcoal black cast-iron facing with attractively detailed brushed-nickel or black air grilles

1. Brushed-nickel finish grille
2. Charcoal black finish grille
3. Fixed-screen panels*



Tiered burner, split oak-style logs and glowing embers deliver an elegant fire presentation. Standard feature on all Spectra fireplaces.

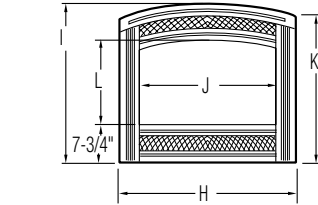
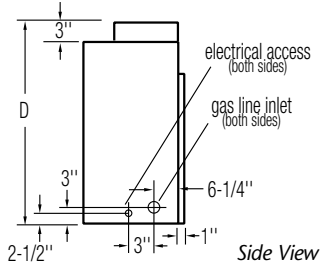
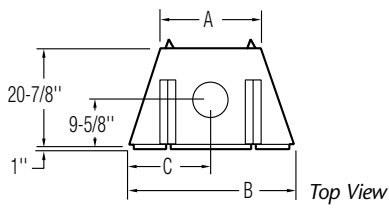
GAS FIREPLACE SPECIFICATIONS

MODEL	GAS	HI BTU/HR	LO BTU/HR	CANADIAN ENERGUIDE RATING	STEADY-STATE %	AFUE**
LSS-35CN	NG	33,000	23,500	51.61	73	70
LSS-35CP	LP	31,000	23,500	53.63	73	71
LSS-40CN	NG	41,500	28,400	58.82	73	70
LSS-40CP	LP	39,000	30,700	61.70	73	71

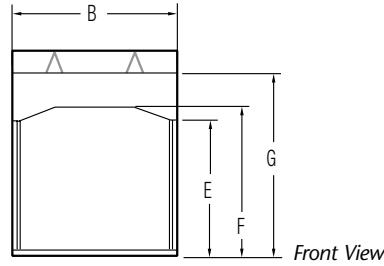
*Provide a barrier to prevent contact with hot glass surface.

**Annual Fuel Utilization Efficiency (AFUE) is the recognized U.S. rating system for the total heating efficiency of heating products.

SPECTRA™ DIMENSIONS

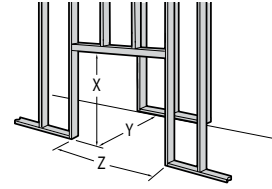


Cast Iron



Front View

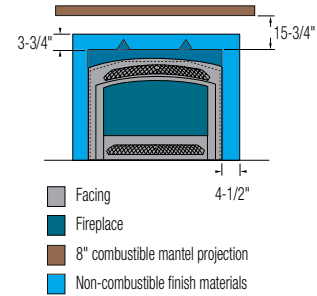
FRAMING DIMENSIONS



	LSS-35	LSS-40
X	42-5/8"	44-1/8"
Y*	20-13/16"	20-13/16"
Z	35-1/4"	40-1/4"

*Framing dimensions calculated for 1/2" drywall.

MINIMUM CLEARANCE TO COMBUSTIBLES



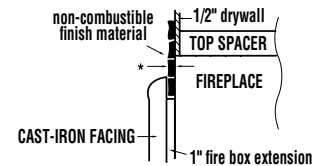
DIMENSIONS

	LSS-35	LSS-40
A	21-1/2"	26-1/2"
B	35"	40"
C	17-1/2"	20"
D	41-3/8"	42-7/8"
E	28-3/8"	29-7/8"
F	31-3/8"	32-7/8"
G	38-3/8"	39-7/8"

FACING DIMENSIONS

	LSS-35	LSS-40
H	36"	41"
I	32-7/8"	34-3/8"
J	28"	33"
K	29-7/8"	31-3/8"
L	17-1/2"	19"

FACING INSTALLATION



*Finish materials used in front of the fireplace structure and above the removable facing must be no more than 1" thick for a minimum distance of 1/2" above the cast-iron facing and 1/2" above the plate steel facings.

On the cover: LSS-40 shown with arched cast-iron facing and black air grille.

PRODUCTS YOU CAN COUNT ON

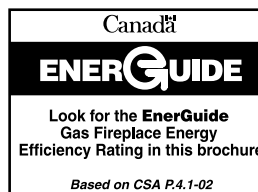
Lennox is committed to providing you with high-quality products. A qualified dealer can help you find the right product to give you years of comfort and enjoyment.



HEARTH PRODUCTS

© Lennox Industries Inc. 2009

Visit us at www.lennox.com, or contact us at 1-800-9-LENNOX.



IMPORTANT NOTES:

As with any heating appliance, fireplace or stove, this appliance is extremely hot during operation. Read and understand all operating instructions before using this appliance. For further information, consult your dealer.

Local conditions, such as elevation, wind, vent configuration and choice of fuel will affect overall appearance of the fire and heating performance. Performance can also vary with home design and insulation, climate, condition and type of fuel used, appliance location, burn rate, accessories chosen, chimney installation and how the appliance is operated.

Diagrams, illustrations and photographs are not to scale—consult installation instructions. Product designs, materials, dimensions, specifications, colors and prices are subject to change or discontinuance without notice.

Tested and certified by OMNI Test Laboratories (report #116-F-02-05) as a Vented Gas Fireplace Heater; ANSI Z21.88; CSA 2.33; CAN/CGA 2.17 M91.

