



Active, roaring fire, dramatic log set and natural brick liners combine to deliver the convenience of gas with realistic fire and ambiance.



HEARTH PRODUCTS
Innovation never felt so good.™

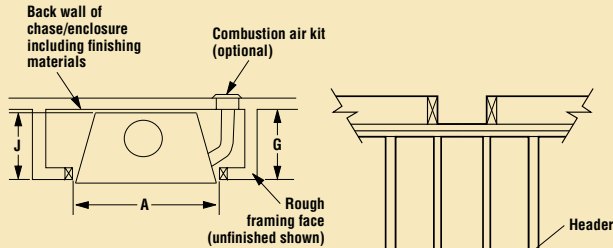


LMBV-42 shown with optional polished brass bi-fold doors

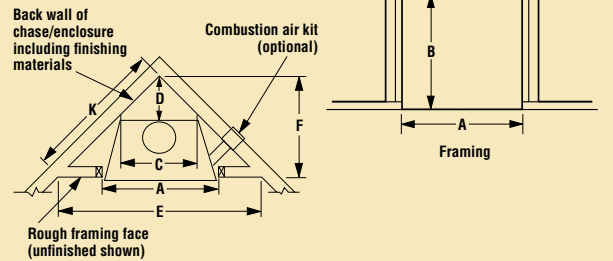
With the Merit™ Series B-vent fireplaces from Lennox, you can enjoy the convenience of gas with the natural beauty of a wood fire. These fireplaces offer a masonry-like appearance, producing roaring flames without great amounts of heat, resulting in a pleasurable experience that can be enjoyed for hours. An array of design choices is available for a touch of custom style and elegance.

FRAMING SPECIFICATIONS

Inside Chase



Corner Chase



LMBV-36

A	42-1/4"	(1073 mm)	F	35"	(889 mm)
B	37-1/2"	(953 mm)	G	20-5/8"	(524 mm)
C	28-3/4"	(730 mm)	J	19-5/8"	(498 mm)
D	15-3/8"	(391 mm)	K	49-1/2"	(1257 mm)
E	70"	(1778 mm)			

LMBV-42

A	46-1/4"	(1175 mm)	F	38-1/8"	(968 mm)
B	43-1/2"	(1105 mm)	G	21-5/8"	(549 mm)
C	33"	(838 mm)	J	20-5/8"	(524 mm)
D	17-1/2"	(445 mm)	K	53-7/8"	(1368 mm)
E	76-1/4"	(1937 mm)			

Note: Nailing flange is adjustable from 5/8" to 1/2". All framing dimensions calculated for 1/2" drywall at the appliance face. If sheathing the chase or finishing with other thickness materials, additional calculations will need to be made.

STANDARD FEATURES

Active, roaring fire provides cozy ambiance for the ultimate in hearth comfort

Detailed, weathered oak-style logs fill the firebox, offering one of the best log presentations in the industry

Real concrete brick refractory creates the distinction of durability and visible quality that stands out

Millivolt and electronic gas valve systems offer flexibility in installation and convenience

Available in two widths – 36" and 42"

Backed by the Good Housekeeping Seal

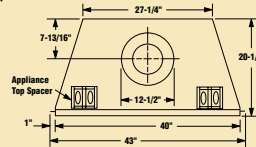
OPTIONAL ACCESSORIES

Designer bi-fold and twin-pane doors

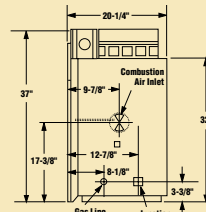


LMBV-36 DIMENSIONS

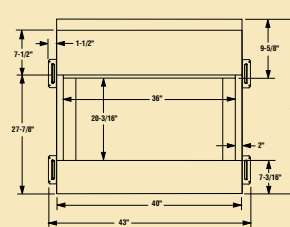
Top View



Right Side View

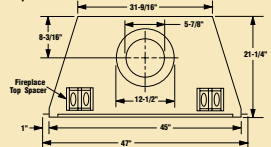


Front View

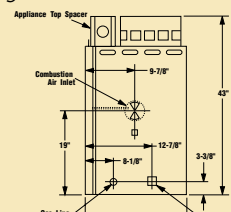


LMBV-42 DIMENSIONS

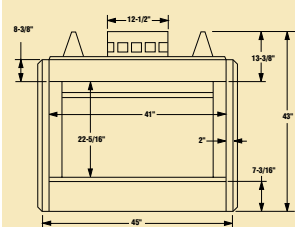
Top View



Right Side View



Front View



IMPORTANT NOTES:

As with any heating appliance, fireplace or stove, this appliance is extremely hot during operation. Read and understand all operating instructions before using this appliance. For further information, consult your dealer.

Local conditions, such as elevation, wind, vent configuration and choice of fuel will affect overall appearance of the fire and heating performance. Performance can also vary with home design and insulation, climate, condition and type of fuel used, appliance location, burn rate, accessories chosen, chimney installation and how the appliance is operated.

Diagrams, illustrations and photographs are not to scale—consult installation instructions. Product designs, materials, dimensions, specifications, colors and prices are subject to change or discontinuance without notice.

Approved to U.S. and Canadian safety and performance standards—ANSI Z21.50/CSA 2.17-M98 vented gas fireplace heaters.

The EnerGuide energy efficiency rating for this vented decorative gas fireplace is 9% (36" model) and 13% (42" model) when tested to the Canadian Standards Association's CSA P.4.1-02 testing method for measuring annual fireplace efficiency.

Canada
ENERGUIDE
Look for the EnerGuide Gas Fireplace Energy Efficiency Rating in this brochure
Based on CSA P.4.1-02



HEARTH PRODUCTS
Innovation never felt so good.™

© Lennox Industries Inc. 2009

Visit us at www.lennox.com, or contact us at 1-800-9-LENNOX.



Tested & Listed By **OTL** Portland Oregon USA
OMNI-Test Laboratories, Inc.