



Expansive viewing area and heat-circulating performance create the ideal room ambiance with an intense, active flame delivering warm and cozy heat.

**LENNOX**<sup>TM</sup>  
**HEARTH PRODUCTS**

**ELITE**<sup>TM</sup> SERIES



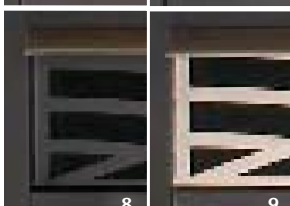
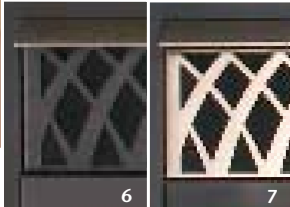
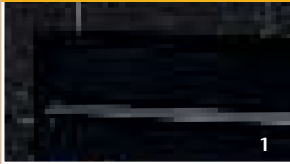
**EDV3530 shown** with tall StyleView™ doors and Crescent style top filigree.



**EDV3530 shown** with standard trim and optional buff rustic brick liner kit.

■ The Elite™ Series front-view direct-vent gas fireplace is the perfect example of how Lennox Hearth Products has revolutionized the convenience and comfort of gas fireplaces. Three various-sized models capture all the pleasure of a real wood-burning fire, but also add an amazing list of convenient and aesthetic features to the experience. Each fireplace has our exclusive natural dispersion burner, so it delivers consistent, cozy warmth—without all the mess of a real fire. They are also specially designed to look authentic on or off, featuring unsurpassed features like a deluxe split oak-style log set, a brilliant flame presentation and a realistic interior. Plus, your fireplace can be customized exactly to your taste with an array of accessories sure to make any of these fireplaces an irresistible addition to your home. ■

## OPTIONAL ACCESSORIES



## STANDARD FEATURES

Louvered face and expansive front-glass view

Deluxe split oak-style log set (6 logs) on a rugged steel grate

Natural dispersion burner system for intense, warm flames that create a natural-looking fire

Tested and certified as a Vented Gas Fireplace Heater: ANSI Z21.88; CGA 2.33M98

Top and rear direct-vent outlets

Variable High/Low valve adjusts flame height and heat output (millivolt models only)

Easy-access flip-down fireplace control panel

Unit-mounted On/Off switch; pre-wired for wall switch

Choice of standing pilot millivolt system that operates even during a power failure, or electronic ignition

Durable, scratch-resistant powder-coated finish

Weld-free construction

Lennox Limited Lifetime Warranty

Backed by the Good Housekeeping Seal

## OPTIONAL ACCESSORIES

1. Flush face panel

Ceramic brick liners available in:

2. Buff rustic brick
3. Buff old cottage
4. Buff herringbone

5. Polished brass or brushed stainless trim or louvers

Decorative filigree louvers available in two styles and two finishes:

6. Crescent style – powder-coated finish
7. Crescent style – satin pewter finish
8. Sunrise style – powder-coated finish
9. Sunrise style – satin pewter finish

10. Choice of three wireless remotes:

- Model RCL – On/Off wireless remote with LCD screen
- Model RCL-T – On/Off wireless remote with LCD screen plus thermostatic control, timer and clock
- Model RCL-M – On/Off wireless remote with LCD screen, thermostatic control, timer and clock plus flame adjustment and fan control

11. Blower kits for improved heat distribution (not shown):

- FBK-100 – On/Off operation
- FBK-200 – Wall-mounted rheostat control
- FBK-250 – Temperature sensor control, plus unit-mounted rheostat control

12. Screen panel kits\*

## OPTIONAL FAÇADE STYLES



Louvered face w/optional full polished brass trim



Louvered face w/optional brushed stainless arch door trim



Louvered face w/optional brushed stainless eyebrow



Optional flush-face unit w/standard finish and door trim

## OPTIONAL STYLE VIEW™ DOOR DESIGNS



Arch door



Arch pane door



Square door



Square pane door



Tall arch pane door

Note: Style View™ doors available in satin pewter, textured iron and antique brass painted finishes. Tall Style View doors are available in satin pewter painted finish.

## OPTIONAL LOUVER STYLES



Filigree Sunrise style louvers



Filigree Crescent style louvers in satin pewter

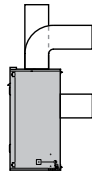
\*Screen panel kit provides a barrier to prevent direct contact with hot glass surface.

## DIMENSIONS

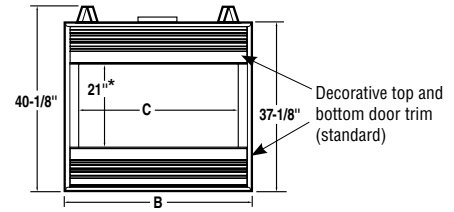


EDV3530-B (35") EDV4035-B (40") EDV4540-B (45")

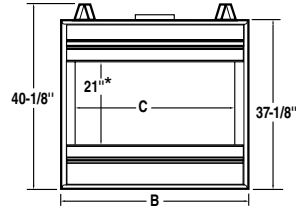
## TOP & REAR DIRECT VENTING



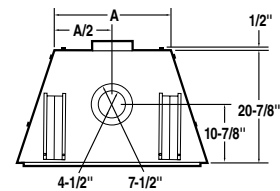
Elite™ Series front-view gas fireplaces have both top and rear direct-vent outlets. Select the best vent outlet for your application.



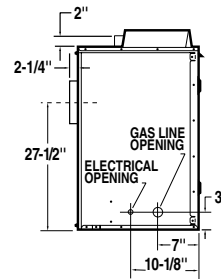
Louvered-Face Front



Optional Flush Face Front



Top View



Right Side View

\*Viewable glass height 24" with decorative top and bottom door trim removed.

## GAS FIREPLACE SPECIFICATIONS

MODEL	A	B	C	WIDTH	FRAMING HEIGHT	DEPTH*	BTU/hr
EDV3530	21-1/2"	35-1/8"	29-1/2"	35-1/2"	40-1/2"	22-1/4"	27,000
EDV4035	26-1/2"	40-1/8"	34-1/2"	40-1/2"	40-1/2"	22-1/4"	30,000
EDV4540	31-1/2"	45-1/8"	39-1/2"	45-1/2"	40-1/2"	22-1/4"	33,000

## GAS FIREPLACE EFFICIENCY %

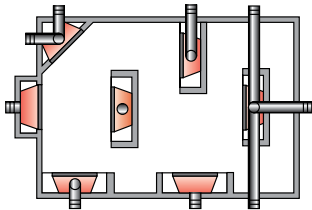
MODEL	CANADIAN ENERGUE RATING**	STEADY-STATE	AFUE***
EDV3530	61 NG / 61 LP	65 NG / 66 LP	63 NG / 64 LP
EDV4035	64 NG / 65 LP	66 NG / 66 LP	64 NG / 64 LP
EDV4540	63 NG / 62 LP	67 NG / 68 LP	65 NG / 66 LP

\*23-3/4" if top venting. See installation manual for specifics.

\*\*Intermittent ignition systems

\*\*\*Annual Fuel Utilization Efficiency (AFUE) is the recognized U.S. rating system for the total efficiency of heating products.

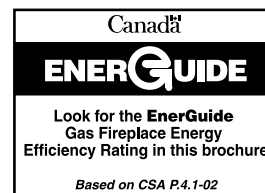
## TYPICAL ROOM APPLICATIONS



On the cover: EDV4035 shown with satin pewter arch pane Style View™ doors and buff rustic brick liner kit.

## PRODUCTS YOU CAN COUNT ON

Lennox is committed to providing you with high-quality products. A qualified dealer can help you find the right product to give you years of comfort and enjoyment.



### IMPORTANT NOTES:

As with any heating appliance, fireplace or stove, this appliance is extremely hot during operation. Read and understand all operating instructions before using this appliance. For further information, consult your dealer.

Local conditions, such as elevation, wind, vent configuration and choice of fuel will affect overall appearance of the fire and heating performance. Performance can also vary with home design and insulation, climate, condition and type of fuel used, appliance location, burn rate, accessories chosen, chimney installation and how the appliance is operated.

Diagrams, illustrations and photographs are not to scale—consult installation instructions. Product designs, materials, dimensions, specifications, colors and prices are subject to change or discontinuance without notice.



HEARTH PRODUCTS

© Lennox Industries Inc. 2009

Visit us at [www.lennox.com](http://www.lennox.com),  
or contact us at 1-800-9-LENNOX.



OMNI-Test Laboratories, Inc.  
Report number: 116-F-05-5